



Travel Kit 2025

NIPPON TRAVEL AGENCY CO., LTD.

At Nippon Travel Agency (NTA), we strive to create new travel experiences, providing our customers with the very best service in the industry today.

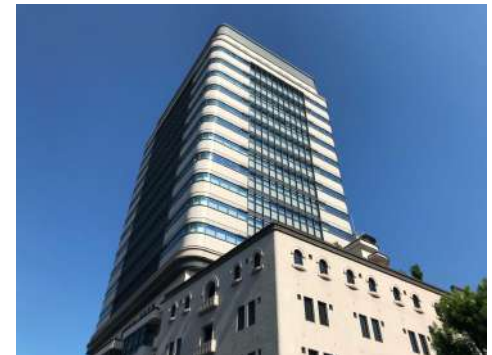
Here's why you should choose us:

1. We handle 200,000+ travelers to Japan every year. From sightseeing to education, VIPs, incentives, sports events or any type of travel that you can name, we are proud to say that we have many experiences of handling them.
2. We have the ability to develop products using our strong connection with the West Japan Railway Company.
3. We are ranked #1 with customer satisfaction among Japanese travel agencies.

*Travel sector of Japanese Customer Satisfaction Index 2018.

We are committed to offering travel services of the highest quality, combining our energy and enthusiasm, with our years of experience. Our greatest achievement comes in serving large numbers of satisfied clients who have experienced the joys and inspiration of travel.

For more about us, please visit [our website](#)

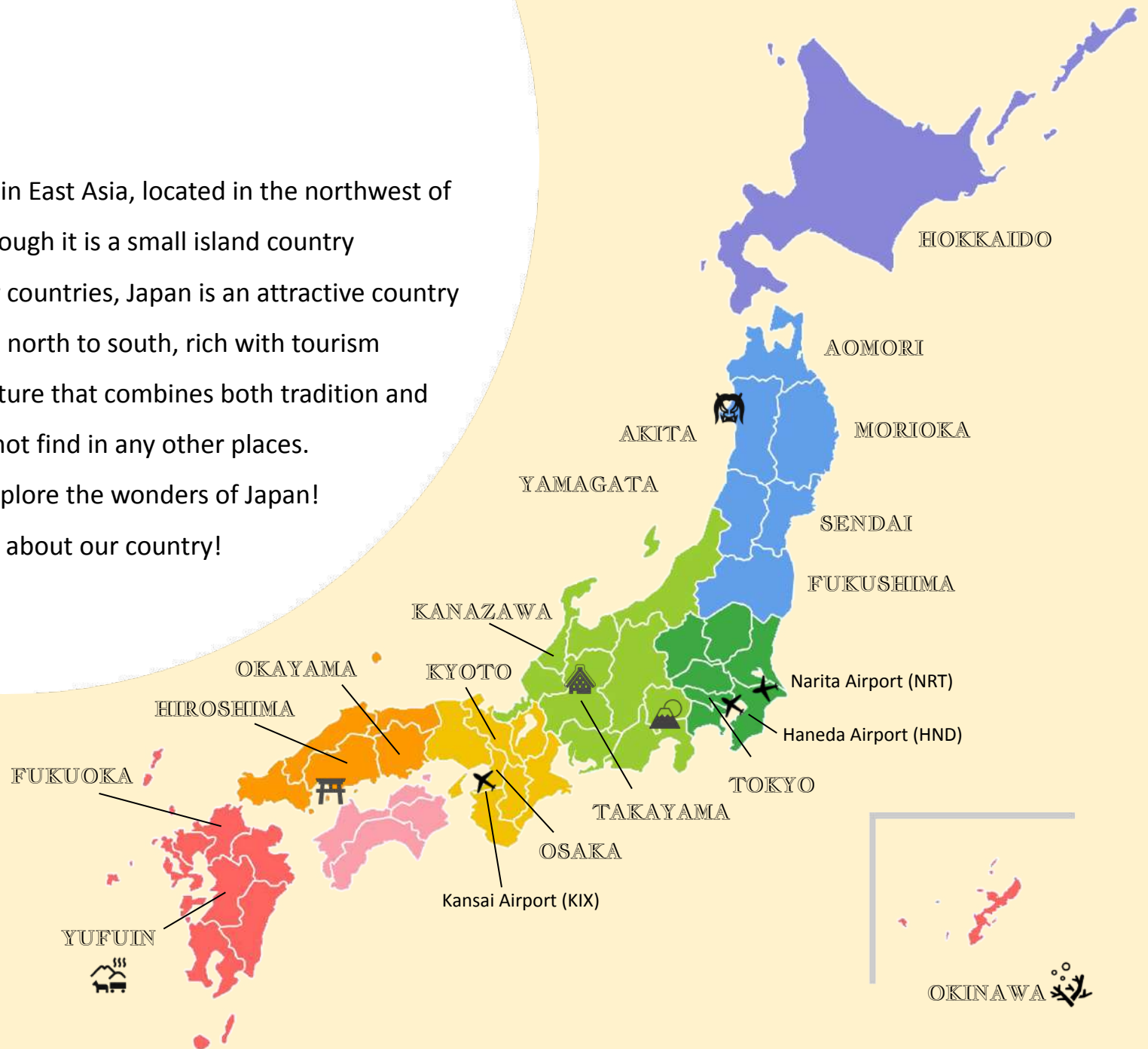


Japan

Japan is an island country in East Asia, located in the northwest of the Pacific Ocean. Even though it is a small island country non-adjacent to any other countries, Japan is an attractive country with various seasons from north to south, rich with tourism resources. Japan has a culture that combines both tradition and modernity which you cannot find in any other places.

Begin your journey and explore the wonders of Japan!

Visit [our website](#) for more about our country!



New Omega



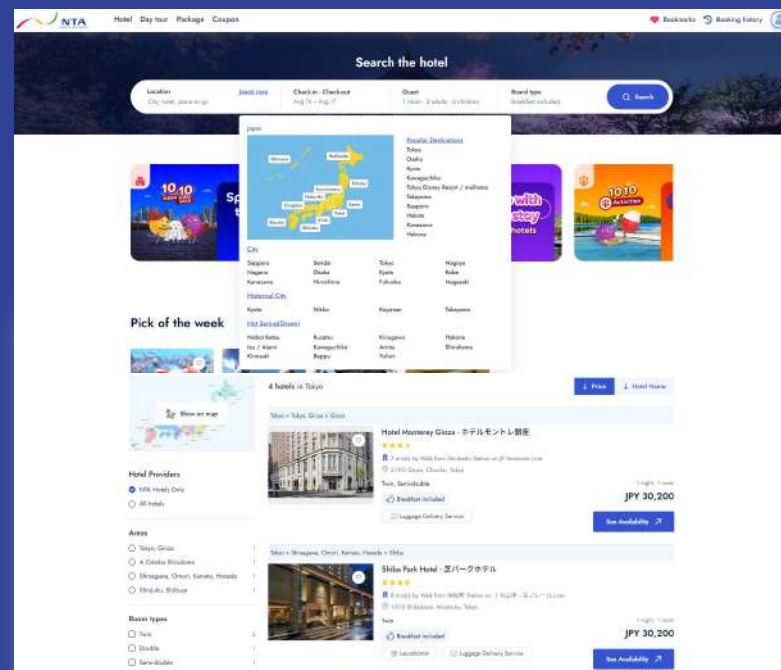
Our user-friendly booking engine will assist you to select the best hotels from our large number of high star-rated hotels and specific Japanese accommodations. Our strength is that we have purchasing departments located all over Japan. We have direct contracts with hotels to receive dedicated inventory for NTA.

Why Omega?

- Over 15,000 Hotels available including NTA direct inventory
- Book multiple room type at once in one booking
- Same ID and Password with Miyabi (Single sign-on)
- Google Map search function available
- Online credit card payment service (Coming soon!)

Contact us

For any questions: omega_support@nta.co.jp



Create Account No registration fee to create an account. If you have access to Miyabi system, you can also book hotels on Omega system.

If you would like to sign up for the first time, please check with our sales team.

Payment Process Our accounting team will follow up with invoices via email. All tour fees need to be paid in Japanese yen and be settled 2 weeks prior to the tour dates by bank wire or credit card, unless we have a separate contract.

Check our recommended hotels on our Omega Line!

TOKYO The New Otani Hotel



TOKYO Shiba Park Hotel



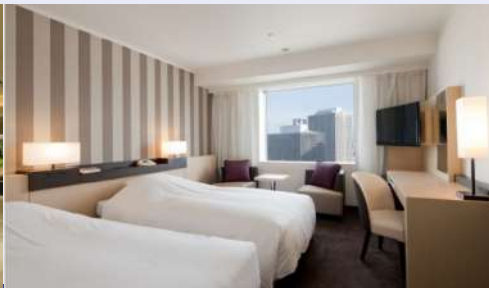
KYOTO Hotel Nikko Princess Kyoto



KYOTO Ref Kyoto Hachijoguchi by Vessel Hotels



OSAKA Hotel Granvia Osaka



OSAKA Hotel Vischio Osaka



Check our recommended hotels on our Omega Line!

KANAZAWA

Hotel Mystays Premier Kanazawa



KANAZAWA

Hotel Intergate Kanazawa



TAKAYAMA

Hotel Associa Takayama Resort



TAKAYAMA

Hoshokaku



HIROSHIMA

Grand Prince Hotel Hiroshima



HIROSHIMA

Hotel Vista Hiroshima



Check our recommended hotels on our Omega Line!

ISAWA

Hotel Kasugai



ISAWA

Hanayagi no Sho Keizan



OKAYAMA

Hotel Granvia Okayama



OKAYAMA

Washu Blue Resort Kasago



FUKUI

Grandia Housen



FUKUI

Eiheiji Hakujuken

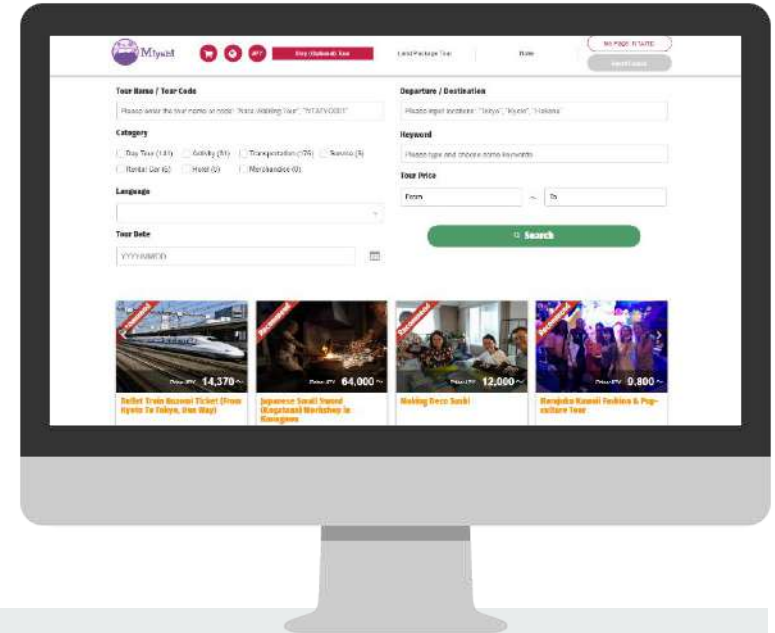




NTA's Tour & Activity Booking System

Why Miyabi?

- Quick booking online. Check the availability on calendar!
- Instant confirmation by email & booking summary on My Page!
- Activities for all over Japan available. From Hokkaido to Okinawa!
- Popular products added daily. Email us to find more!
- Complete customer care by NTA guaranteed.



Useful Features

01 Easy search

Search by category, location, tour code, and more.

Search by category, destination,
tour code, and more!

Tour Name / Tour Code

Kyoto Arashiyama ← Search by keywords!

Kyoto Arashiyama Morning Tour [KMA]

Kyoto Arashiyama Morning Tour with Sagano Romantic Train [KSA]

02 Voucher

You can customize the voucher!
Use our logo or upload yours!

Booked on	Updated on	Voucher
Status	Edit Voucher	
2020/12/22	2020/12/22	
CONFIRMED	Detail	Voucher

Issue voucher easily!

Voucher			
How Many	One Month		Rs
Mark Attendance Missing Time (Ignore absence) (Days/hrs)			
Mark Dates			
Total Rs.0.00			
Name		Date	
about 0:12:04 - 0:00:00		Saturday Mar 1 2007	
about 0:00:00 - 0:00:00		Sunday Mar 4 2007	
about 0:00:00 - 0:00:00		Monday Mar 5 2007	
about 0:00:00 - 0:00:00		Tuesday Mar 6 2007	
about 0:00:00 - 0:00:00		Wednesday Mar 7 2007	
about 0:00:00 - 0:00:00		Thursday Mar 8 2007	
about 0:00:00 - 0:00:00		Friday Mar 9 2007	
about 0:00:00 - 0:00:00		Saturday Mar 10 2007	
about 0:00:00 - 0:00:00		Sunday Mar 11 2007	
about 0:00:00 - 0:00:00		Monday Mar 12 2007	
about 0:00:00 - 0:00:00		Tuesday Mar 13 2007	
about 0:00:00 - 0:00:00		Wednesday Mar 14 2007	
about 0:00:00 - 0:00:00		Thursday Mar 15 2007	
about 0:00:00 - 0:00:00		Friday Mar 16 2007	
about 0:00:00 - 0:00:00		Saturday Mar 17 2007	
about 0:00:00 - 0:00:00		Sunday Mar 18 2007	
about 0:00:00 - 0:00:00		Monday Mar 19 2007	
about 0:00:00 - 0:00:00		Tuesday Mar 20 2007	
about 0:00:00 - 0:00:00		Wednesday Mar 21 2007	
about 0:00:00 - 0:00:00		Thursday Mar 22 2007	
about 0:00:00 - 0:00:00		Friday Mar 23 2007	
about 0:00:00 - 0:00:00		Saturday Mar 24 2007	
about 0:00:00 - 0:00:00		Sunday Mar 25 2007	
about 0:00:00 - 0:00:00		Monday Mar 26 2007	
about 0:00:00 - 0:00:00		Tuesday Mar 27 2007	
about 0:00:00 - 0:00:00		Wednesday Mar 28 2007	
about 0:00:00 - 0:00:00		Thursday Mar 29 2007	
about 0:00:00 - 0:00:00		Friday Mar 30 2007	
about 0:00:00 - 0:00:00		Saturday Mar 31 2007	
about 0:00:00 - 0:00:00		Sunday Apr 1 2007	
about 0:00:00 - 0:00:00		Monday Apr 2 2007	
about 0:00:00 - 0:00:00		Tuesday Apr 3 2007	
about 0:00:00 - 0:00:00		Wednesday Apr 4 2007	
about 0:00:00 - 0:00:00		Thursday Apr 5 2007	
about 0:00:00 - 0:00:00		Friday Apr 6 2007	
about 0:00:00 - 0:00:00		Saturday Apr 7 2007	
about 0:00:00 - 0:00:00		Sunday Apr 8 2007	
about 0:00:00 - 0:00:00		Monday Apr 9 2007	
about 0:00:00 - 0:00:00		Tuesday Apr 10 2007	
about 0:00:00 - 0:00:00		Wednesday Apr 11 2007	
about 0:00:00 - 0:00:00		Thursday Apr 12 2007	
about 0:00:00 - 0:00:00		Friday Apr 13 2007	
about 0:00:00 - 0:00:00		Saturday Apr 14 2007	
about 0:00:00 - 0:00:00		Sunday Apr 15 2007	
about 0:00:00 - 0:00:00		Monday Apr 16 2007	
about 0:00:00 - 0:00:00		Tuesday Apr 17 2007	
about 0:00:00 - 0:00:00		Wednesday Apr 18 2007	
about 0:00:00 - 0:00:00		Thursday Apr 19 2007	
about 0:00:00 - 0:00:00		Friday Apr 20 2007	
about 0:00:00 - 0:00:00		Saturday Apr 21 2007	
about 0:00:00 - 0:00:00		Sunday Apr 22 2007	
about 0:00:00 - 0:00:00		Monday Apr 23 2007	
about 0:00:00 - 0:00:00		Tuesday Apr 24 2007	
about 0:00:00 - 0:00:00		Wednesday Apr 25 2007	
about 0:00:00 - 0:00:00		Thursday Apr 26 2007	
about 0:00:00 - 0:00:00		Friday Apr 27 2007	
about 0:00:00 - 0:00:00		Saturday Apr 28 2007	
about 0:00:00 - 0:00:00		Sunday Apr 29 2007	
about 0:00:00 - 0:00:00		Monday Apr 30 2007	
about 0:00:00 - 0:00:00		Tuesday May 1 2007	
about 0:00:00 - 0:00:00		Wednesday May 2 2007	
about 0:00:00 - 0:00:00		Thursday May 3 2007	
about 0:00:00 - 0:00:00		Friday May 4 2007	
about 0:00:00 - 0:00:00		Saturday May 5 2007	
about 0:00:00 - 0:00:00		Sunday May 6 2007	
about 0:00:00 - 0:00:00		Monday May 7 2007	
about 0:00:00 - 0:00:00		Tuesday May 8 2007	
about 0:00:00 - 0:00:00		Wednesday May 9 2007	
about 0:00:00 - 0:00:00		Thursday May 10 2007	
about 0:00:00 - 0:00:00		Friday May 11 2007	
about 0:00:00 - 0:00:00		Saturday May 12 2007	
about 0:00:00 - 0:00:00		Sunday May 13 2007	
about 0:00:00 - 0:00:00		Monday May 14 2007	
about 0:00:00 - 0:00:00		Tuesday May 15 2007	
about 0:00:00 - 0:00:00			

Sample voucher



 Miyabi



NTA

Day Tour

1

DOATYO001

Amazing Tokyo 1 day tour

<https://new.ntaredballoon.jp/daytour/detail/1187/>

Enjoy highlights of Tokyo with English speaking guide.
Multilingual audio guidance available on the bus.



2

DOAHAK003

Fantastic Fuji & Hakone 1 day tour

<https://new.ntaredballoon.jp/daytour/detail/1180/>

Feel the power of volcanic activity at Owakudani valley
and enjoy wonderful views of Hakone and Mt. Fuji!



3

DOANAR001

Historical Nara & Kyoto 1 Day Tour

<https://new.ntaredballoon.jp/daytour/detail/2410/>

Discover Nara's must-see landmarks!



4

DOASKG001

Nostalgic Shirakawago & Kanazawa 1 Day Tour

<https://new.ntaredballoon.jp/daytour/detail/1786/>

Explore the world famous UNESCO village from Kanazawa station!



5

JTBMYJ001

1Day Hiroshima & Miyajima Tour

<https://new.ntaredballoon.jp/daytour/detail/2298/>

or Brand NEW cycling tour

<https://new.ntaredballoon.jp/daytour/detail/2412/>


Activity

1

MANGAW001

Tokyo Manga lesson

<https://new.ntaredballoon.jp/daytour/detail/2342/>

Here you can create Manga, using specialized tools with professional Manga artist.



2

TDYKYO903

Kimono experience

<https://new.ntaredballoon.jp/daytour/detail/1228/>

The venue is located in Kyoto's main textile centre and preserved Machiya townhouse from nearly 130 years ago.



3

TCSHIR001

Nighttime Hiroshima Food Tour

<https://new.ntaredballoon.jp/daytour/detail/2368/>

Enjoy the delicious flavors and unique nightlife culture of Hiroshima on this tour!!



4

IMJHS001

Hiroshima Morning Hike Tour

<https://new.ntaredballoon.jp/daytour/detail/2414/>

Feel the early morning air of Futaba Mountain and enjoy an outdoor tea ceremony.



5

HTAFUK001

1 Hour Private Photoshoot in Fukuoka

<https://new.ntaredballoon.jp/daytour/detail/2339/>

Private Photoshoot by a professional photographer to shoot at a location of your choice!



Miyabi


NTA
NIPPON TRAVEL AGENCY

Bus & Train Ticket

1

Hakone Free Pass

- E-Voucher 2 Days From Shinjuku or Odawara
- E-Voucher 3 Days From Shinjuku or Odawara



2

Nohi bus ticket

- NOHQU001 Takayama to Shirakawago
- NOHQU003 Shirakawago to Takayama
- NOHQU002 Shirakawago to Kanazawa
- NOHQU004 Kanazawa to Shirakawago



3

Koyasan World Heritage Ticket

- NTAKYS002 Koyasan World Heritage Ticket



4

Kintetsu Rail Pass

- KINTETSU RAIL PASS 2-day
- KINTETSU RAIL PASS 5-day
- KINTETSU RAIL PASS plus (5-day)
- KINTETSU RAIL PASS 1-day



Looking for more products?

Visit our website for more products.

Please visit by below URL or scan the QR code for access!

□ <https://new.ntaredballoon.jp/>



Wifi & Sim Card

1

Wifi rental service

- WiFi router will be sent to guest's hotel before check in.
- WiFi router rental (Hotel delivery)
- WiFi router rental (Pick up from Airport Assistant)



2

Prepaid data Sim card

Easy setting with high speed communication! SoftBank main line will be used, stable connection is expected.

- Prepaid data Sim card (3GB)
- Prepaid data Sim card (10GB)



3

Prepaid data e-Sim card

Unlike a physical SIM, there is no need to replace it! Make a simple setting with just scan the QR code.

- Prepaid data Sim card (10GB)



Contact us

- For your bookings: miyabi_booking@nta.co.jp
- For any questions: miyabi_support@nta.co.jp

We are happy to host online meetings to show what we offer and how to use the system!



Miyabi



NTA
NIPPON TRAVEL AGENCY

Japan Rail Pass



The bullet train in Japan offers high speed transportation with comfort, and is one of the best ways to travel between long distant cities. Most bullet trains offer reserved seats and non-reserved seats. The Japan Rail Pass (JR pass) can be used on all Bullet Trains with some exceptions like Nozomi and Mizuho. You can also ride regular JR local and rapid trains with JR pass.

Price change in Oct 2023

The Japan Railways has increased the price for the JR passes from October 2023. Please check the table for new prices.

Japan Rail Pass needs to be purchased outside of Japan or individually through JR official website. NTA Tokyo cannot directly offer the passes to your customers. Sales at the counters in the stations in Japan is not available since the end Sep 2023.

	Until Sep 30	From Oct 1
7 days	JPY 29,650	JPY 50,000
7 days Green	JPY 39,600	JPY 70,000
14 days	JPY 47,250	JPY 80,000
14 days Green	JPY 64,120	JPY 110,000
21 days	JPY 60,450	JPY 100,000
21 days Green	JPY 83,390	JPY 140,000

Area Passes

Use area passes to ! For example, with Hokuriku Arch Pass and Kansai-Hiroshima Rail Pass, they can use the transportation at almost the similar price as the old price of the 14-day JR Pass!

HOKURIKU ARCH PASS	7 days	JPY 24,500
WEST (KANSAI-HIROSHIMA) RAIL PASS	5 days	JPY 17,000
	Total	JPY 41,500

HOKURIKU ARCH PASS [official website](#)

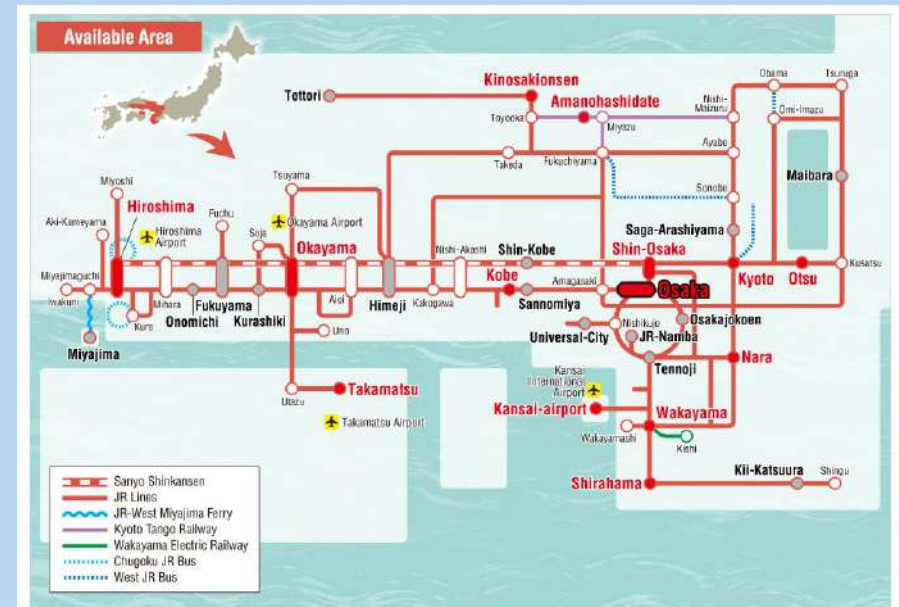
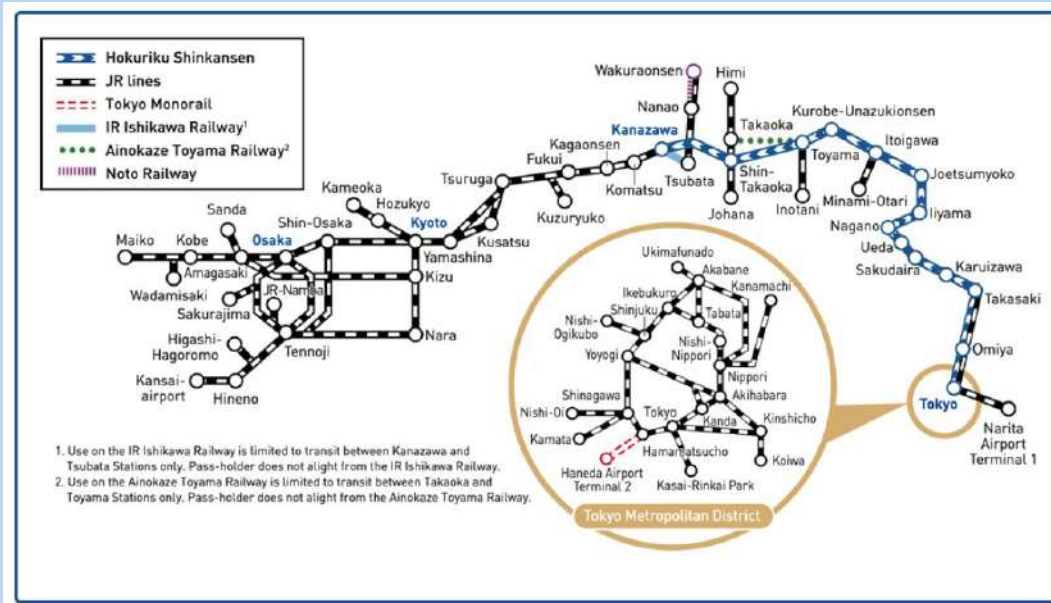
Includes NEX(Narita Express) and Tokyo Monorail

		Until Sep 30	From Oct 1
Japan Rail Pass	14 days	JPY 47,250	JPY 80,000

JPY38,500 difference!

WEST (KANSAI-HIROSHIMA) RAIL PASS [official website](#)

Available for Nozomi and Mizuho bullet trains



Purchase from our partners

Please contact our overseas group companies or suppliers if you would like to purchase small amount.

Region	Company	e-mail
Asia, Middle East	NTA TRAVEL (SINGAPORE) PRIVATE. LTD	travel@nta.sg
Oceania	NIPPON TRAVEL AGENCY (AUSTRALIA)PTY.LTD.	ecs@nta-sachitours.com.au
Canada	NIPPON TRAVEL AGENCY CANADA LTD.	ntacan@ntacanada.com
America, Latin America	NIPPON TRAVEL AGENCY AMERICA INC.	info@ntaamerica.com
Europe, Africa	Japan Experience	thierrymaincent@japan-experience.com

Be our partner

If you are willing to

- ✓ Sell more than 20 passes per month and 250 per year
- ✓ Pay the minimum deposit of 1 million JPY (Deposit amount is not equal to the amount you can sell)
- ✓ Login to our JR pass system to issue JR passes and check our invoices
- ✓ Deliver physical passes to customers before the trip
- ✓ NOT to discount the passes (prohibited in the contract)

Please contact JR pass team at team_jrpass@nta.co.jp to contract.

WORLD HERITAGE 14 DAYS

Highlights

- One of the top selling tours since 2015 with brand new JR area passes!
- Book Hokuriku Arch Pass 7 days, Koyasan World Heritage Ticket, and West (Kansai) Rail Pass 2 days to cover the whole itinerary

ITINERARY

ACCOMMODATION

Day 1	TOKYO (ARRIVAL)	Hokuriku Arch Pass Day 1	TOKYO
Arrive at Narita International Airport (NRT) or Tokyo International Airport (HND). Meet an airport assistant to exchange Hokuriku Arch Pass. Transfer to your hotel by JR Narita Express train or Tokyo Monorail & JR local train using Hokuriku Arch Pass. Book airport assistant: at the Narita airport / at the Haneda airport			
Day 2-4	TOKYO	Day 2-4	TOKYO
Whole day free at leisure Book optional tours: Tokyo Day Tour / Fuji & Hakone Day Tour / Nikko Tour			
Day 5	TOKYO - KANAZAWA	Day 5	KANAZAWA
Make your own way to Tokyo Station. Transfer to Kanazawa by JR Bullet (Kagayaki) train using Hokuriku Arch Pass. (Travel time 150min.) Upon arrival, transfer to accommodation on your own. Whole day is free at leisure. Recommended visit : Kenrokuen Garden, Omchoi Market, Higashi Chaya District, Samurai District			
Day 6	KANAZAWA - SHIRAKAWAGO - TAKAYAMA	Day 6	TAKAYAMA
Make your own way to bus stop (Kanazawa Station West Exit Platform 4) Transfer to Shirakawago by Nohi Bus. (Travel time 75 min.) Book: Nohi bus ticket for Shirakawago Explore Shirakawago Village, Gasshozukuri traditional farmhouse on foot Transfer to Takayama by Nohi Bus. (Travel time 50 min.) Book: Nohi bus ticket for Takayama Upon arrival, transfer to accommodation on your own. Whole day free at leisure. Recommended visit: Kusakabe Folk Museum, Jinya House , Kami Sannomachi Street			
Day 7	TAKAYAMA - SHIRAKAWAGO - KYOTO	Day 7	KYOTO
Free time in Takayama in the morning Recommended visits : Morning Market In the afternoon, make your own way to bus stop at Takayama station and transfer to Kanazawa by Nohi Bus. (Travel time 135 min.) Book: Nohi Bus from Takayama to Kanazawa Transfer to Kyoto by limited express train using Hokuriku Arch Pass. (Travel time 130min.) Upon arrival, transfer to accommodation on your own.			

Day 8-10	KYOTO	KYOTO
Whole day free at leisure. Book optional tours: Kyoto Bus Tour / Tea ceremony + Kimono experience / Rental Bike		
Day 11	KYOTO - MT. KOYA	Koyasan World Heritage Ticket Day 1 MT. KOYA
Make your own way to Nankai Namba station. Transfer from Nankai Namba to Mt.Koya via Gokurakubashi using Koyasan World Heritage Ticket. (Travel time 90min.) Book: Koyasan World Heritage Ticket Upon arrival, transfer to accommodation on your own. Whole day free at leisure. Recommended visit : Kondo Hall, Konpon Daito Pagoda, and Reihokan Museum, Okunoin Temple		
Day 12	MT. KOYA- OSAKA	Koyasan World Heritage Ticket Day 2 KYOTO
Make your own way to Gokurakubashi station. Transfer from Gokurakubashi to Namba station using Koyasan World Heritage Ticket. (Travel time 110min.) Upon arrival, transfer to accommodation on your own. Whole day free at leisure.		
Day 13	OSAKA	Kansai Area Pass Day 1 OSAKA
Whole day free at leisure. Book optional tours: 1-Day Osaka Walking Tour / Osaka Local Bar Crawl		
Day 14	OSAKA (DEPARTURE)	Kansai Area Pass Day 2
Make your own way to Shin Osaka station. Transfer to KIX (Kansai International Airport) by JR Express (Haruka) train using West (Kansai - Hiroshima) Rail Pass. (Travel time 50min.)		



KANSAI HIROSHIMA 7DAYS

Highlights

- Popular routes among travelers from Asian countries starting the trip from Kansai International airport in Osaka.
- This tour does not include Tokyo. Most recommended for repeaters.
- Book West (Kansai – Hiroshima) area pass 5 days to cover the whole itinerary

ITINERARY

ACCOMMODATION

Day 1 OSAKA (ARRIVAL)

OSAKA

Arrive at Kansai International Airport (KIX).
Meet an airport assistant and transfer to Osaka by JR Express train Haruka and JR local trains.
Book airport assistant; [at the KIX airport](#)
Make your own way to your hotel. Whole day free at leisure.

Day 2 OSAKA

OSAKA

Whole day free at leisure.
Book optional tours: [Perfect Kyoto 1 Day Tour with Lunch](#)
[1-Day Osaka Walking Tour](#)
[Sagano Romantic Train and Kyoto One Day Bus Tour](#)

Day 3 OSAKA

Kansai Hiroshima Area Pass Day 1

OSAKA

Whole day free at leisure.
* You can use the Kansai Hiroshima Area pass to visit Kobe

Day 4 OSAKA - OKAYAMA

Day 2

OKAYAMA

Make your own way to Shin Osaka Station.
Transfer to Okayama by JR Bullet train using Kansai Hiroshima Area Pass. (Travel time 60min.)
Upon arrival, transfer to accommodation on your own.
Whole day free at leisure.

After arrive at Okayama, you can take JR local train to visit Kurashiki.
Before heading to Okayama, we recommend to visit Himeji by using JR Bullet train.
Recommended visits : Korakuen, Kurashiki (Bikan Area), Himeji (Himeji Castle)

Day 5 OKAYAMA - HIROSHIMA

Day 3

HIROSHIMA

Make your own way to Okayama Station.
Transfer to Hiroshima by JR Bullet train using Kansai Hiroshima Area Pass. (Travel time 40min.)
Upon arrival, transfer to accommodation on your own.
Book optional tours: [1Day Hiroshima & Miyajima Tour](#)/[Hiroshima 3hr peace cycling Tour](#)

Day 6 HIROSHIMA - OSAKA

Day 4

OSAKA

Whole day free at leisure.
Make your own way to Hiroshima Station. Transfer to Shin- Osaka by JR Bullet train using Kansai Hiroshima Area Pass. (Travel time 90 mins)
Upon arrival, transfer to accommodation on your own.
Book optional tour: [Nara Afternoon Tour\(from Kyoto\)](#)
* You can also use the pass to go to Kyoto

Day 7 OSAKA (DEPARTURE)

Day 5

Make your own way to Osaka station.
Transfer to KIX (Kansai International Airport) by JR Express (Haruka) train using Kansai Hiroshima Area Pass. (Travel time 90min.)



RAINBOW COMBO TOUR 16 DAYS

Highlights

- Book Hokuriku Arch Pass 7 days and West (Kansai – Hiroshima) area pass 5 days to cover the whole itinerary

ITINERARY

ACCOMMODATION

Day 1	TOKYO (ARRIVAL)	Hokuriku Arch Pass Day 1	TOKYO
Arrive at Narita International Airport (NRT) or Tokyo International Airport (HND). Meet an airport assistant to exchange Hokuriku Arch Pass. Transfer to your hotel by JR Narita Express train or Tokyo Monorail & JR local train using Hokuriku Arch Pass. Book airport assistant: at the Narita airport / at the Haneda airport			
Day 2-4	TOKYO	Day 2-4	TOKYO
Whole day free at leisure Book optional tours: Tokyo Day Tour / Fuji & Hakone Day Tour / Nikko Tour			
Day 5	TOKYO - KANAZAWA	Day 5	KANAZAWA
Make your own way to Tokyo Station. Transfer to Kanazawa by JR Bullet (Kagayaki) train using Hokuriku Arch Pass. (Travel time 150min.) Upon arrival, transfer to accommodation on your own. Whole day is free at leisure. Recommended visit : Kenrokuen Garden, Omchoi Market, Higashi Chaya District, Samurai District			
Day 6	KANAZAWA - TAKAYAMA	Day 6	TAKAYAMA
Make your own way to bus stop (Kanazawa Station West Exit Platform 4) Transfer to Takayama via Shirakawago by Nohi Bus. (Travel time 135min.) Book: Nohi bus tickets Upon arrival, transfer to accommodation on your own. Whole day free at leisure. Recommended visits: Kusakabe Folk Museum, Jinya House, Kami Sannomachi Street			
Day 7	TAKAYAMA – SHIRAKAWAGO - KYOTO	Day 7	KYOTO
Make your own way to bus stop at Takayama station. Transfer to Shirakawago by Nohi Bus. (Travel time 50min.) Book: Nohi bus tickets Explore Shirakawago Village, Gasshozukuri traditional farmhouse on foot Transfer to Kanazawa by Nohi Bus. (Travel time 75min.) Book: Nohi bus tickets Transfer from Kanazawa to Kyoto by limited express train using Hokuriku Arch Pass. (Travel time 130min.) Upon arrival, transfer to accommodation on your own.			
Day 8-10	KYOTO		KYOTO
Whole day free at leisure. Book optional tours: Kyoto Bus Tour / Tea ceremony + Kimono experience / Rental Bike Nara Afternoon Tour (from Kyoto)			

Day 11	KYOTO – MT. KOYA		MT.KOYA
Make your own way to Nankai Namba station. Transfer from Nankai Namba to Mt.Koya via Gokurakubashi using Koyasan World Heritage Ticket. (Travel time 90min.) Book: Koyasan World https://new.ntaredballoon.jp/daytour/detail/1278/ Upon arrival, transfer to accommodation on your own. Whole day free at leisure. Recommended visit : Kondo Hall, Konpon Daito Pagoda, and Reihokan Museum, Okunoin Temple			
Day 12	MT.KOYA - HIROSHIMA	West Kansai Hiroshima Day 1	HIROSHIMA
Make your own way to Gokurakubashi station. Transfer from Gokurakubashi to Namba station using Koyasan World Heritage Ticket. (Travel time 110min.) Upon arrival, transfer to Shin Osaka station by subway/taxi. Transfer from Shin Osaka to Hiroshima by JR Bullet train using West (Kansai - Hiroshima) Rail Pass. (Travel time 90min.) Upon arrival, transfer to accommodation on your own. Whole day free at leisure. Recommended visit :Atomic Bomb Dome & Peace Memorial Park, Peace Memorial Museum			
Day 13	HIROSHIMA - MIYAJIMA	Day 2	MIYAJIMA
Make your own way to JR Hiroshima station. Transfer from Hiroshima to Miyajimaguchi by JR local train using West (Kansai - Hiroshima) Rail Pass. (Travel time 30min.) Transfer from Miyajimaguchi to Miyajima by JR ferry using West (Kansai - Hiroshima) Rail Pass. (Travel time 23min.) Upon arrival, transfer to accommodation on your own. Whole day free at leisure. Recommended visi places :Five Story Pagoda, Itsukushima Shrine, Omotesando Shopping Street Book optional tours: Calligraphy in Miyajima / Kimono experience in Miyajima 1Day Hiroshima & Miyajima Tour / Hiroshima 3hr peace cycling Tour			
Day 14	MIYAJIMA – HIROSHIMA - OSAKA	Day 3	OSAKA
Make your own way to Miyajima ferry terminal. Transfer from Miyajima to Hiroshima by JR ferry and local train using West (Kansai - Hiroshima) Rail Pass. (Travel time 60min.) Transfer from Hiroshima to Shin Osaka by JR Bullet train using West (Kansai - Hiroshima) Rail Pass. (Travel time 90min.) Upon arrival, transfer to accommodation on your own. Whole day free at leisure.			
Day 15	OSAKA	Day 4	OSAKA
Whole day free at leisure. Book optional tours: 1-Day Osaka Walking Tour / Osaka Local Bar Crawl			
Day 16	OSAKA (DEPARTURE)	Day 5	
Make your own way to Shin Osaka station. Transfer to KIX (Kansai International Airport) by JR Express (Haruka) train using West (Kansai - Hiroshima) Rail Pass. (Travel time 50min.)			

KANAZAWA & HIROSHIMA 14 DAYS

Highlights

- Book Hokuriku Arch Pass 7 days and West (Kansai – Hiroshima) Rail Pass 5 days to cover the whole itinerary.

ITINERARY

ACCOMMODATION

Day 1 TOKYO (ARRIVAL) Hokuriku Arch Pass Day 1 TOKYO

Arrive at Narita International Airport (NRT) or Tokyo International Airport (HND).
Meet an airport assistant to exchange Hokuriku Arch Pass.
Transfer to your hotel by JR Narita Express train or Tokyo Monorail & JR local train using Hokuriku Arch Pass.
Book airport assistant: [at the Narita airport](#) / [at the Haneda airport](#)

Day 2-4 TOKYO Day 2-4 TOKYO

Whole day free at leisure
Book optional tours: [Tokyo Day Tour](#) / [Fuji & Hakone Day Tour](#) / [Nikko Tour](#)

Day 5 TOKYO - KANAZAWA Day 5 KANAZAWA

Make your own way to Tokyo Station. Transfer to Kanazawa by JR Bullet (Kagayaki) train using Hokuriku Arch Pass. (Travel time 150min.)
Upon arrival, transfer to accommodation on your own. Whole day is free at leisure.

Day 6 KANAZAWA Day 6 KANAZAWA

Whole day free at leisure
Book optional tours: [Nostalgic Shirakawago & Kanazawa 1 Day Tour](#)

Day 7 KANAZAWA - KYOTO Day 7 KYOTO

Make your own way to Kanazawa Station.
Transfer to Kyoto by limited express train using Hokuriku Arch Pass. (Travel time 120min.)
Upon arrival, transfer to accommodation on your own.
Whole day is free at leisure.

Day 8-9 KYOTO Day 8-9 KYOTO

Whole day free at leisure.
Book optional tours: [Kyoto Bus Tour](#) / [Tea ceremony + Kimono experience](#) / [Rental Bike](#)
[Nara Afternoon Tour \(from Kyoto\)](#)

Day 10 KYOTO - HIROSHIMA West Kansai Hiroshima Day 1 HIROSHIMA

Make your own way to Kyoto station.
Transfer from Kyoto to Hiroshima by JR Bullet train using West (Kansai - Hiroshima) Rail Pass. (Travel time 90min.) Upon arrival, transfer to accommodation on your own.
Whole day free at leisure.
Recommended visit :Atomic Bomb Dome & Peace Memorial Park, Peace Memorial Museum

Day 11 HIROSHIMA Day 2 HIROSHIMA

Whole day free at leisure.
You can visit Miyajima island via Miyajima ferry.
Recommended visit :Five Story Pagoda, Itsukushima Shrine, Omotesando Shopping Street
Book optional tours: [1Day Hiroshima & Miyajima Tour](#) / [Hiroshima 3hr peace cycling Tour](#)
[Calligraphy in Miyajima](#) / [Kimono experience in Miyajima](#)

Day 12 HIROSHIMA - OSAKA Day 3 OSAKA

Make your own way to Hiroshima station.
Transfer from Hiroshima to Shin Osaka by JR Bullet train using West (Kansai - Hiroshima) Rail Pass. (Travel time 90min.)
Upon arrival, transfer to accommodation on your own. Whole day free at leisure.

Day 13 OSAKA Day 4 OSAKA

Whole day free at leisure.
Book optional tours: [1-Day Osaka Walking Tour](#) / [Osaka Local Bar Crawl](#)

Day 14 OSAKA (DEPARTURE) Day 5

Make your own way to Shin Osaka station.
Transfer to KIX (Kansai International Airport) by JR Express (Haruka) train using West (Kansai - Hiroshima) Rail Pass. (Travel time 50min.)



